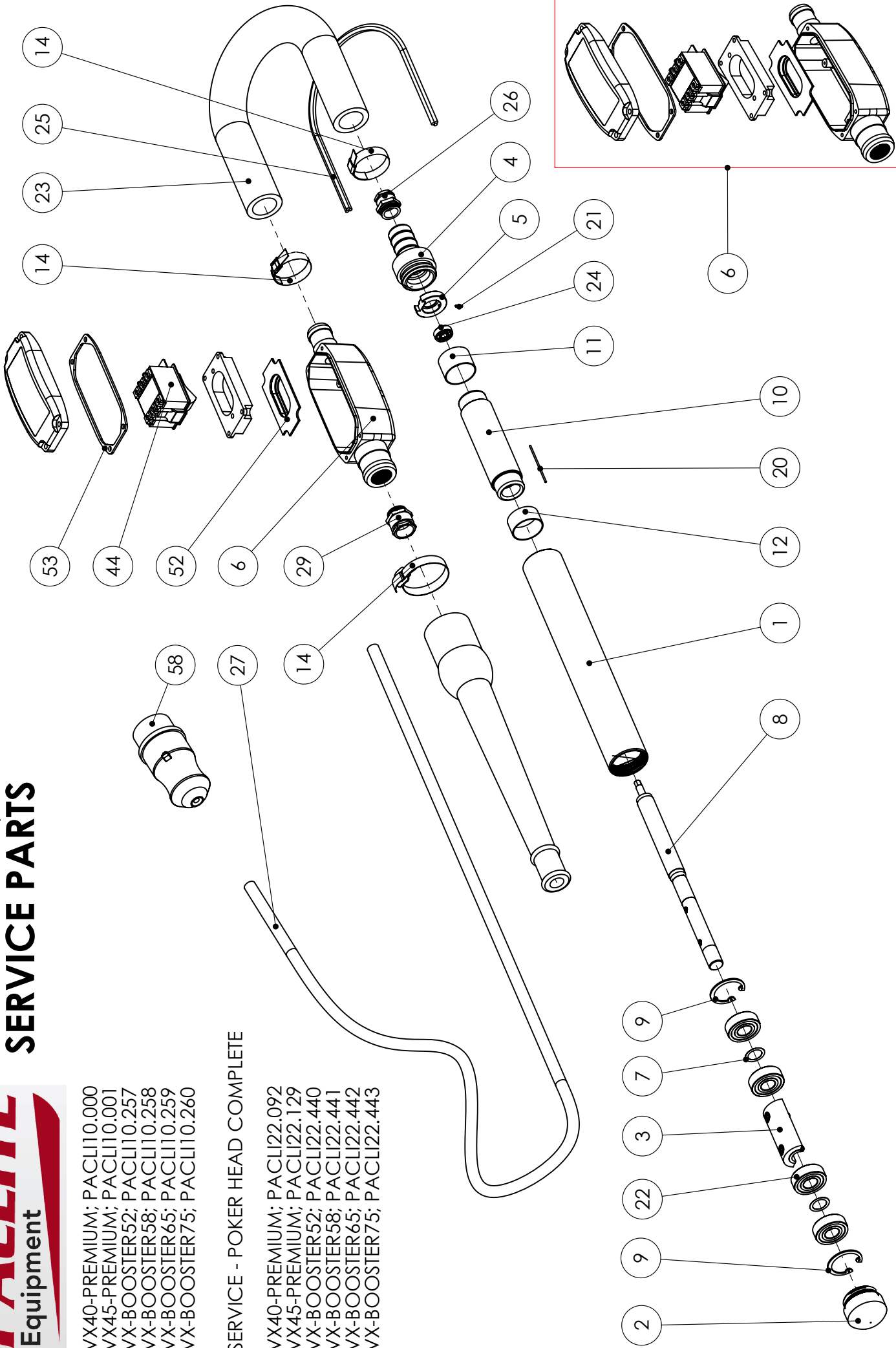


# VX-PREMIUM, VX-BOOSTER SERVICE PARTS

VX40-PREMIUM; PACLI10.000  
 VX45-PREMIUM; PACLI10.001  
 VX-BOOSTER52; PACLI10.257  
 VX-BOOSTER58; PACLI10.258  
 VX-BOOSTER65; PACLI10.259  
 VX-BOOSTER75; PACLI10.260

## SERVICE - POKER HEAD COMPLETE

VX40-PREMIUM; PACLI22.092  
 VX45-PREMIUM; PACLI22.129  
 VX-BOOSTER52; PACLI22.440  
 VX-BOOSTER58; PACLI22.441  
 VX-BOOSTER65; PACLI22.442  
 VX-BOOSTER75; PACLI22.443



		<b>PACLITE</b>		Rev. nº 0
		<b>SPARE LIST</b>		Date: 09/05/2009
		<b>HIGH FREQUENCY POKER VX40-PREMIUM</b>		<b>PACLI 10.000</b>
<b>QTY.</b>	<b>DESCRIPTION</b>	<b>DRAW Nº</b>	<b>CODE</b>	
1	POKER BOTTLE (YELLOW) AE 385		PACLI 22.092	
1	CYLINDER MOTOR HOUSING	1	PACLI 38.230	
1	CYLINDER TAP NUT	2	PACLI 38.232	
1	ECCENTRIC	3	PACLI 38.233	
1	LINK HOSE NUT	4	PACLI 38.231	
1	BEARING SUPPORT	5	PACLI 32.019	
1	SWITCH BOX (WITHOUT SWITCH) MARQUARDT (YELLOW)	6	PACLI 30.327.1	
1	SWITCH BOX (WITH SWITCH) MARQUARDT (YELLOW)	6	PACLI 30.328.1	
1	COMPLETE ROTOR SET	8	PACLI 26.079	
1	SEGER RING I 32 DIN 472	9	PACLI 82.027	
1	COMPLETE STATOR SET (33x18hxL100)	10	PACLI 24.101	
1	DISTANCER COLLAR L=25	11	PACLI 38.235	
1	DISTANCER COLLAR L=16,5	12	PACLI 38.234	
3	HOSE CLAMP J-236	14	PACLI 46.064	
1	STATOR CYLINDER PIN 1.5x28 (LONG)	20	PACLI 52.007	
1	BEARING SUPPORT PIN 2x7,8 (SHORT)	21	PACLI 52.023	
2	BEARING 6201-ZZ-C3 12x32x10	22	PACLI 75.047	
1	RUBBER HOSE SAE 100 R1A 3/4" 5 METERS	23	PACLI 58.024.5	
1	BEARING 626 ZZ-C3 6x19x6	24	PACLI 75.050	
1	INTERIOR CONNECTION CABLE 3x2,5 (5 METERS LONG)	25	PACLI 60.006	
1	PACKING BOX BOTTLE M12x1,5x10	26	PACLI 62.063	
1	CONNECTION CABLE 3x2,5 (10 METERS LONG)	27	PACLI 60.007.BQF.3PH.10	
1	PACKING BOX SWITCH BOX M20x1,5 (6-12)	29	PACLI 62.097.1	
1	SWITCH MARQUARD	44	PACLI 66.022	
1	SWITCH SILICON SEAL	52	PACLI 76.105	
1	SWITCH BOX CONNECTOR COVER	53	PACLI 76.106	
1	RUBBER SLEEVE	57	PACLI 58.022	
1	CETAC PLUG 42V	58	PACLI 65.011	

<b>PACLITE</b>		Rev. nº 0	
<b>SPARE LIST</b>		Date: 09/05/2009	
<b>HIGH FREQUENCY POKER VX45-PREMIUM</b>			<b>PACLI 10.001</b>
<b>QTY.</b>	<b>DESCRIPTION</b>	<b>DRAW Nº</b>	<b>CODE</b>
1	POKER BOTTLE (YELLOW) AE 425		PACLI 22.129
1	CYLINDER MOTOR HOUSING	1	PACLI 38.256
1	CYLINDER TAP NUT	2	PACLI 38.260
1	ECCENTRIC	3	PACLI 38.259
1	LINK HOSE NUT	4	PACLI 38.257
1	BEARING SUPPORT	5	PACLI 32.019
1	SWITCH BOX (WITHOUT SWITCH) MARQUARDT (YELLOW)	6	PACLI 30.331.1
1	SWITCH BOX (WITH SWITCH) MARQUARDT (YELLOW)	6	PACLI 30.332.1
2	FRICITION WASHER 15x21X0,1	7	PACLI 78.059
1	COMPLETE ROTOR SET	8	PACLI 26.086
1	SEGER RING I 35 DIN 472	9	PACLI 82.032
1	COMPLETE STATOR SET (33x18xL 100)	10	PACLI 24.101
1	DISTANCER COLLAR L=25	11	PACLI 38.235
1	DISTANCER COLLAR L=16,5	12	PACLI 38.234
3	HOSE CLAMP J-236	14	PACLI 46.064
1	STATOR CYLINDER PIN 1.5x28 (LONG)	20	PARCLI 52.007
1	BEARING SUPPORT PIN 2x7,8 (SHORT)	21	PACLI 52.023
4	BEARING 6202 Z C3 15x35x11	22	PACLI 75.030
1	RUBBER HOSE MF 550 (5 METERS LONG)	23	PACLI 58.001.5
1	BEARING 626 ZZ C3 6x19x6	24	PACLI 75.050
1	INTERIOR CONNECTION 3x2,5 (5 METERS LONG)	25	PACLI 60.006
1	PACKING BOX BOTTLE M20x1,5x15	26	PACLI 62.062
1	CONNECTION CABLE 3x2,5 (10 METERS LONG)	27	PACLI 60.007.BQF.3PH.10
1	PACKING BOX SWITCH BOX M20x1,5 (6-12)	29	PACLI 62.097.1
1	SWITCH MARQUARDT	44	PACLI 66.022
1	SWITCH SILICON SEAL	52	PACLI 76.105
1	SWITCH BOX CONNECTOR COVER	53	PACLI 76.106
1	RUBBER SLEEVE	57	PACLI 58.022
1	CETAC PLUG 42V	58	PACLI 65.011

<b>PACLITE</b>		Rev. nº 0	
<b>SPARE PARTS LIST</b>		Date: 09/05/2009	
<b>HIGH FREQUENZY POCKER VX-BOOSTER 52</b>			<b>PACLI 10.257</b>
<b>QTY.</b>	<b>DESCRIPTION</b>	<b>DRAW Nº</b>	<b>CODE</b>
1	POCKER BOTTLE (YELLOW) TURBO 52		PACLI 22.440
1	CYLINDER MOTOR HOUSING	1	PACLI 38.308
1	CYLINDER TAP NUT (TEMPER)	2	PACLI 38.226.TE
1	ECCENTRIC	3	PACLI 38.304
1	LINK HOSE NUT	4	PACLI 38.225
1	BEARING SUPPORT	5	PACLI 32.028
1	SWITCH BOX (WITHOUT SWITCH) MARQUARDT (YELLOW)	6	PACLI 30.331.1
1	SWITCH BOX (WITH SWITCH) MARQUARDT (YELLOW)	6	PACLI 30.332.1
1	FRICITION WASHER 20x28x0,1	7	PACLI 78.045
1	COMPLETE ROTOR SET	8	PACLI 26.098
2	SEEGER RING I 42 DIN 472	9	PACLI 82.026
1	COMPLETE STATOR SET (Ø42x21,5hxL120)	10	PACLI 24.131
1	DISTANCE COLLAR L=36	11	PACLI 38.229
1	DISTANCE COLLAR L=27	12	PACLI 38.228
3	HOSE CLAMP J-236	14	PACLI 46.064
1	STATOR CYLINDER PIN 1.5x28 (LONG)	20	PACLI 52.007
1	BEARING SUPPORT PIN 3x7,8 (SHORT)	21	PACLI 52.038
4	BEARINGS 6004 J2ZE C3 P6 M1 IV 20X42X12	22	PACLI 75.092
1	RUBBER HOSE MF 550 (5 METERS LONG)	23	PACLI 58.001.5
1	BEARING 6000 JZE C3 P6 M1 IV 10x26x8	24	PACLI 75.090
1	INTERIOR CONNECTION CABLE 3x2,5 (5 METERS LONG)	25	PACLI 60.006
1	PACKING BOX BOTTLE M20x1,5x15	26	PACLI 62.062
1	CONNECTION CABLE 3x2,5 (10 METERS LONG)	27	PACLI 60.007.BQF.3PH.10
1	PACKING BOX SWITCH BOX M20x1,5 (6-12)	29	PACLI 62.097.1
1	SWITCH MARQUARDT	44	PACLI 66.022
1	SWITCH SILICON SEAL	52	PACLI 76.105
1	SWITCH BOX CONNECTOR COVER	53	PACLI 76.106
1	RUBBER SLEEVE	57	PACLI 58.022
1	CETAC PLUG 42V	58	PACLI 65.011

<b>PACLITE</b>		Rev. nº 0	
<b>SPARE PARTS LIST</b>		Date: 09/05/2009	
<b>HIGH FREQUENZY POCKER VX-BOOSTER 58</b>			<b>PACLI 10.258</b>
<b>QTY.</b>	<b>DESCRIPTION</b>	<b>DRAW Nº</b>	<b>CODE</b>
1	POCKER BOTTLE (YELLOW) TURBO 58		PACLI 22.441
1	CYLINDER MOTOR HOUSING	1	PACLI 38.309
1	CYLINDER TAP NUT (TEMPER)	2	PACLI 38.220.TE
1	ECCENTRIC	3	PACLI 38.305
1	LINK HOSE NUT	4	PACLI 38.219
1	BEARING SUPPORT	5	PACLI 32.017
1	SWITCH BOX (WITHOUT SWITCH) MARQUARDT (YELLOW)	6	PACLI 30.331.1
1	SWITCH BOX (WITH SWITCH) MARQUARDT (YELLOW)	6	PACLI 30.332.1
1	FRICTION WASHER 20x28x0.1	7	PACLI 78.045
1	COMPLETE ROTOR SET	8	PACLI 26.099
2	SEEGER RING I 50 DIN 472	9	PACLI 82.029
1	COMPLETE STATOR SET (Ø 50x27,5hxL120)	10	PACLI 24.132
1	DISTANCE COLLAR L=38	11	PACLI 38.222
1	DISTANCE COLLAR L=27	12	PACLI 38.221
3	HOSE CLAMP J-236	14	PACLI 46.064
1	STATOR CYLINDER PIN 1.5x28 (LONG)	20	PACLI 52.007
1	BEARING SUPPORT PIN 3x9.8	21	PACLI 52.024
4	BEARINGS 6204 J2ZE C3 P6 M1 IV 20x47x14	22	PACLI 75.093
1	RUBBER HOSE MF 550 (5 METERS LONG)	23	PACLI 58.001.5
1	BEARING 6000 JZE C3 P6 M1 IV 10x26x8	24	PACLI 75.090
1	INTERIOR CONNECTION CABLE 3x2,5 (5 METERS LONG)	25	PACLI 60.006
1	PACKING BOX BOTTLE M20x1,5x15	26	PACLI 62.062
1	CONNECTION CABLE 3x2,5 (10 METERS LONG)	27	PACLI 60.007.BQF.3PH.10
1	PACKING BOX SWITCH BOX M20x1,5 (6-12)	29	PACLI 62.097.1
1	SWITCH MARQUARDT	44	PACLI 66.022
1	SWITCH SILICON SEAL	52	PACLI 76.105
1	SWITCH BOX CONNECTOR COVER	53	PACLI 76.106
1	RUBBER SLEEVE	57	PACLI 58.022
1	CETAC PLUG 42V	58	PACLI 65.011

<b>PACLITE</b>		Rev. nº 0	
<b>SPARE PARTS LIST</b>		Date: 09/05/2009	
<b>HIGH FREQUENZY POCKER VX-BOOSTER 65</b>			<b>PACLI 10.259</b>
<b>QTY.</b>	<b>DESCRIPTION</b>	<b>DRAW Nº</b>	<b>CODE</b>
1	POCKER BOTTLE (YELLOW) TURBO 65		PACLI 22.442
1	CYLINDER MOTOR HOUSING	1	PACLI 38.310
1	CYLINDER TAP NUT (TEMPER)	2	PACLI 38.215.TE
1	ECCENTRIC	3	PACLI 38.306
1	LINK HOSE NUT	4	PACLI 38.202
1	BEARING SUPPORT	5	PACLI 32.016
1	SWITCH BOX (WITHOUT SWITCH) MARQUARDT (YELLOW)	6	PACLI 30.331.1
1	SWITCH BOX (WITH SWITCH) MARQUARDT (YELLOW)	6	PACLI 30.332.1
1	FRICTION WASHER 25x35x0.1	7	PACLI 78.046
1	COMPLETE ROTOR SET	8	PACLI 26.100
2	SEEGER RING I 52 DIN 472	9	PARCLI 82.022
1	COMPLETE STATOR SET (Ø 52x27,5hxL120)	10	PACLI 24.133
1	DISTANCE COLLAR L=38	11	PACLI 38.217
1	DISTANCE COLLAR L=28	12	PACLI 38.216
3	HOSE CLAMP J-236	14	PACLI 46.064
1	STATOR CYLINDER PIN 1.5x28 (LONG)	20	PACLI 52.007
1	BEARING SUPPORT PIN 3x9.8	21	PACLI 52.024
4	BEARINGS 6205 J1ZE C3 P6 M1 IV 25x52x15	22	PACLI 75.094
1	RUBBER HOSE MF 550 (5 METERS LONG)	23	PACLI 58.001.5
1	BEARING 6000 JZE C3 P6 M1 IV 10x26x8	24	PACLI 75.090
1	INTERIOR CONNECTION CABLE 3x4 (5 METERS LONG)	25	PACLI 60.087
1	PACKING BOX BOTTLE M20x1,5x15	26	PACLI 62.062
1	CONNECTION CABLE 3x4 (10 METERS LONG)	27	PACLI 60.073.BQF.3PH.10
1	PACKING BOX SWITCH BOX M20x1,5 (10-14)	29	PACLI 62.097
1	SWITCH MARQUARDT	44	PACLI 66.022
1	SWITCH SILICON SEAL	52	PACLI 76.105
1	SWITCH BOX CONNECTOR COVER	53	PACLI 76.106
1	RUBBER SLEEVE	57	PACLI 58.022
1	CETAC PLUG 42V	58	PACLI 65.011

PACLITE		Rev. nº 0	
SPARE PARTS LIST		Date: 09/05/2009	
HIGH FREQUENZY POCKER VX-BOOSTER 75			PACLI 10.260
QTY.	DESCRIPTION	DRAW Nº	CODE
1	POCKER BOTTLE (YELLOW) TURBO 75		PACLI 22.443
1	CYLINDER MOTOR HOUSING	1	PACLI 38.311
1	CYLINDER TAP NUT (TEMPER)	2	PACLI 38.211.TE
1	ECCENTRIC	3	PACLI 38.307
1	LINK HOSE NUT	4	PACLI 38.203
1	BEARING SUPPORT	5	PACLI 32.015
1	SWITCH BOX (WITHOUT SWITCH) MARQUARDT (YELLOW)	6	PACLI 30.331.1
1	SWITCH BOX (WITH SWITCH) MARQUARDT (YELLOW)	6	PACLI 30.332.1
1	FRICTION WASHER 25x35x0.1	7	PACLI 78.046
1	COMPLETE ROTOR SET	8	PACLI 26.101
2	SEEGER RING I 62 DIN 472	9	PACLI 82.021
1	COMPLETE STATOR SET (Ø 60x30hxL120)	10	PACLI 24.134
1	DISTANCE COLLAR L=35	11	PACLI 38.213
1	DISTANCE COLLAR L=24	12	PACLI 38.212
3	HOSE CLAMP J-236	14	PACLI 46.064
1	STATOR CYLINDER PIN 1.5x28 (LONG)	20	PACLI 52.007
1	BEARING SUPPORT PIN 3x9.8	21	PACLI 52.024
4	BEARINGS 6305 J4ZE C3 P6 M1 IV 25x62x17	22	PACLI 75.095
1	RUBBER HOSE MF 550 (5 METERS LONG)	23	PACLI 58.001.5
1	BEARING 6000 JZE C3 P6 M1 IV 10x26x8	24	PACLI 75.090
1	INTERIOR CONNECTION CABLE 3x4 (5 METERS LONG)	25	PACLI 60.087
1	PACKING BOX SWITCH BOX M20x1,5x15	26	PACLI 62.062
1	CONNECTION CABLE 3x4 (10 METERS LONG)	27	PACLI 60.073.BQF.3PH.10
1	PACKING BOX BOTTLE M20x1,5x15 (10-14)	29	PACLI 62.097
1	SWITCH MARQUARDT	44	PACLI 66.022
1	SWITCH SILICON SEAL	52	PACLI 76.105
1	SWITCH BOX CONNECTOR COVER	53	PACLI 76.106
1	RUBBER SLEEVE	57	PACLI 58.022
1	CETAC PLUG 42V	58	PACLI 65.011