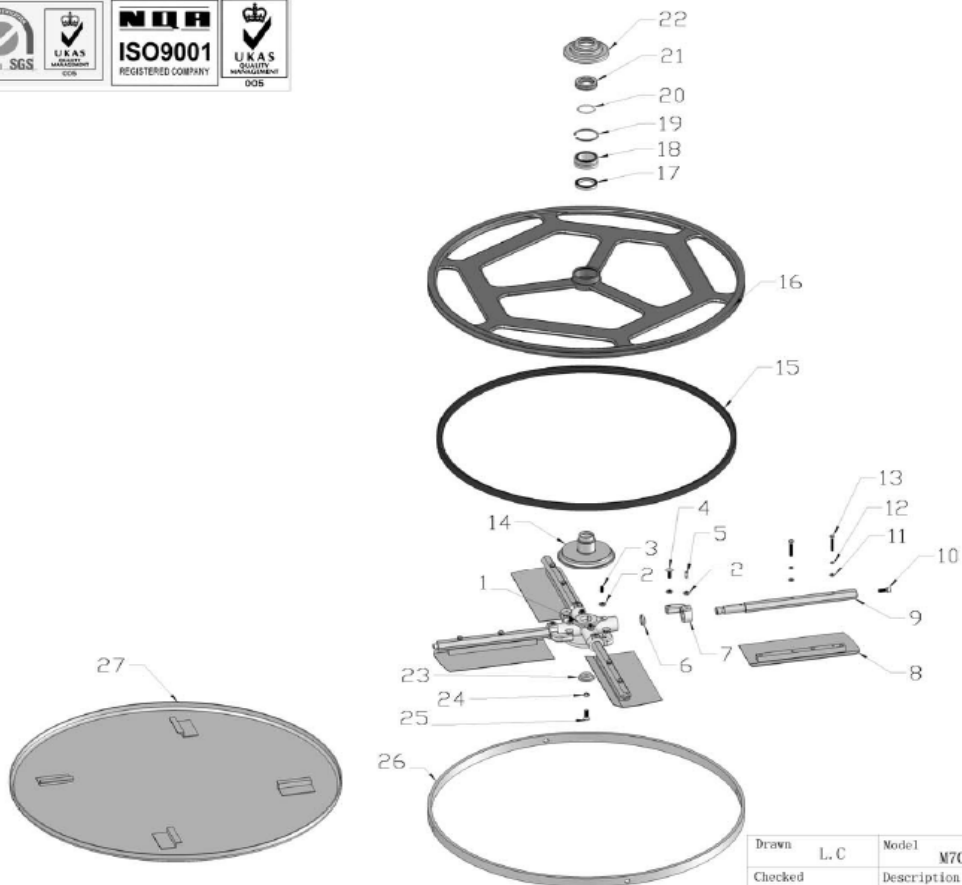


M700-01 SPIDER ASSY

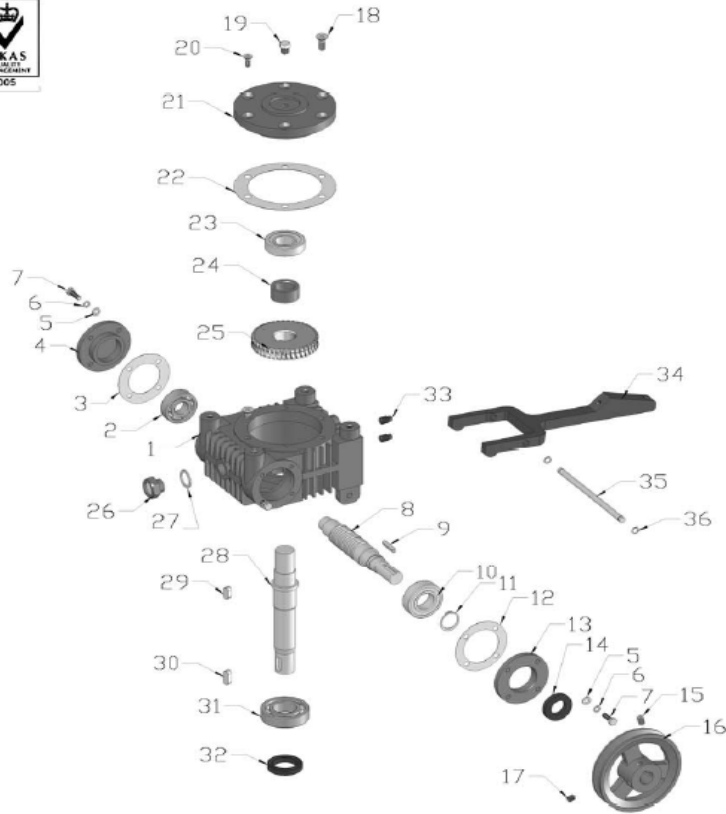


| | | | | | |
|----------|------|-------------|--------------|-------------|----------|
| Drawn | L. C | Model | M700 | Drawing No. | M700-01P |
| Checked | | Description | SPIDER ASSY | | |
| Approved | | Date | 2009. 7. 28. | | |

M700-01 SPIDER ASSY

| NO. 序号 | PART NO. 图号 | PART DESCRIPTION 品名 | QTY 数量 | UNIT PRICE (EUR) |
|-----------|---------------------------|--|-----------|---------------------|
| 01-1 | M700-606-050301 | SPIDER (十字连接器) | 1 | |
| 01-2 | M700-FNL.N-M8 | HEXAGON THIN NUT (六角薄螺母) | 12 | |
| 01-3 | M700-ConeHSS.S-M8x20 | GRUB SCREW (锥端紧定螺钉) | 4 | |
| 01-4 | M700-CHSN.B-M8x25-GB-1 | BOLT (半圆头方颈螺栓) | 4 | |
| 01-5 | M700-GB79-85-M8x20 | SOCKET SCREW WITH CYLINDRICAL POINT(内六角圆柱端紧定螺钉) | 4 | |
| 01-6 | M700-W03-DH-20 | OIL SEAL (油封) | 4 | |
| 01-7 | M700-606-050401 | TILT ARM (连接头) | 4 | |
| 01-8 | M700-750-050100 | BLADE (刀片) | 4 | |
| 01-9 | M700-750-050501A | SPIDER ARM (六角棒) | 4 | |
| 01-10 | M700-HS.B-M8x20-8.8-GB-1 | SCREW (内六角螺钉) | 4 | |
| 01-11 | M700-FN.W6-DIN-1 | WASHER (平垫) | 8 | |
| 01-12 | M700-SPG.W6-DIN-1 | SPRING WASHER (弹垫) | 8 | |
| 01-13 | M700-FN.B-M6x40-8.8-DIN-1 | BOLT (六角螺栓) | 8 | |
| 01-14 | M700-606-040303 | TILT PLATE (台阶圈) | 1 | |
| 01-15 | M700-750-040802 | RUBBER RING (橡胶圈) | 1 | |
| 01-16 | M700-750-040801 | GUARD PLATE (护盘) | 1 | |
| 01-17 | M700-W01-6808V-J | BEARING (轴承) | 1 | |
| 01-18 | M700-W01-NKI 40/20-J | BEARING (轴承) | 1 | |
| 01-19 | M700-CH.RG55 | INTERNAL CIRCLIP (孔用弹性挡圈) | 1 | |
| 01-20 | M700-SS.RG40 | EXTERNAL CIRCLIP (轴用钢丝挡圈) | 1 | |
| 01-21 | M700-W01-51107-J | BEARING (轴承) | 1 | |
| 01-22 | M700-606-040302 | BEARING COVER (轴承盖) | 1 | |
| 01-23 | M700-606-050701 | END CAP (端盖) | 1 | |
| 01-24 | M700-CETL.W8 | COUNTERSUNK EXTERNAL TOOTHED LOCK WASHER(锥形锁紧垫圈) | 1 | |
| 01-25 | M700-HSF.S-M8x25 | SOCKET COUNTERSUNK HEAD SCREW (内六角沉头螺钉) | 1 | |
| 01-26 | M700-750-050601 | GUARD RING (护圈) | 1 | |
| 01-27 | M700-70G-080000P | ROUND PAN (抹盘) | 1 | |

M700-02 GEARBOX ASSY

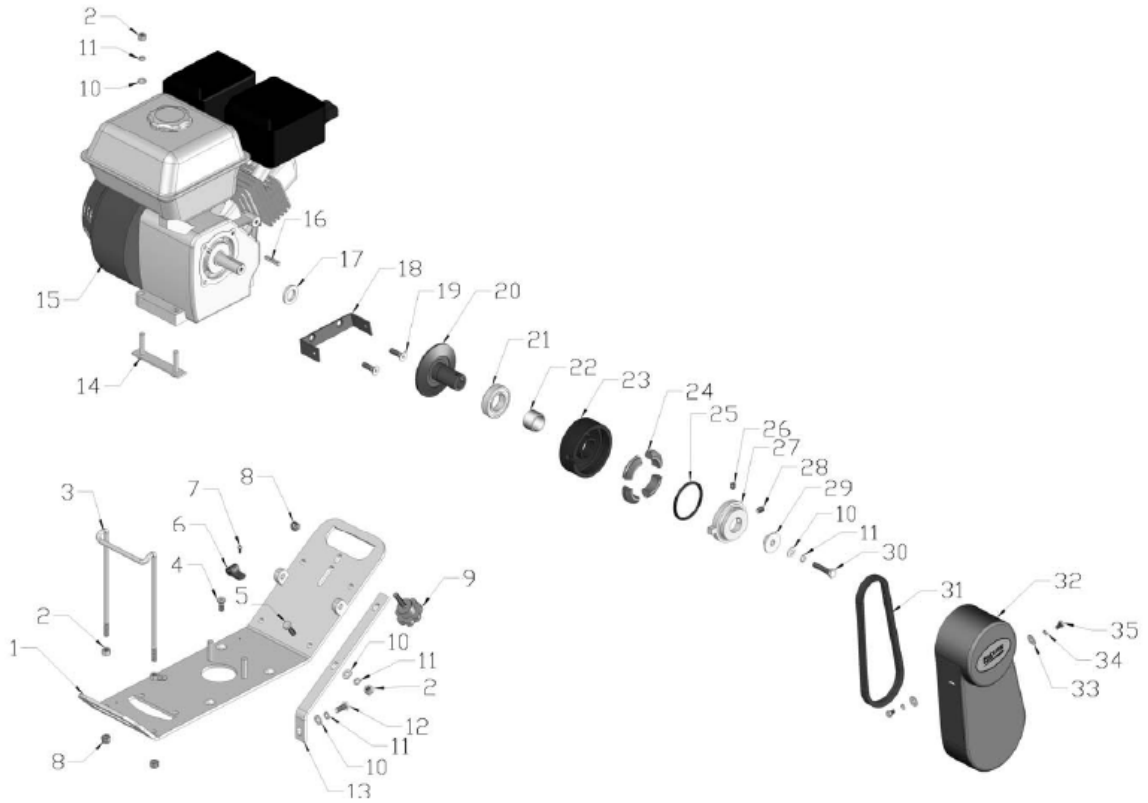


| | | | | | |
|----------|------|-------------|--------------|-------------|---------|
| Drawn | L. C | Model | M700 | Drawing No. | M700-02 |
| Checked | | Description | GEARBOX ASSY | | |
| Approved | | Date | 2009. 7. 28. | | |

M700-02 GEARBOX ASSY

| NO. 序号 | PART NO. 图号 | PART DESCRIPTION 品名 | QTY 数量 | UNIT PRICE (EUR) |
|-----------|---------------------------|--|-----------|---------------------|
| 02-1 | M700-606-040101 | WORM GEAR BOX (蜗轮箱) | 1 | |
| 02-2 | M700-W01-6204-J | BEARING (轴承) | 1 | |
| 02-3 | M700-606-040106 | SEAL, CLOSE COVER (闷盖纸垫片) | 1 | |
| 02-4 | M700-606-040103 | CLOSE COVER (闷盖) | 1 | |
| 02-5 | M700-FN.W6-DIN-1 | WASHER (平垫) | 8 | |
| 02-6 | M700-SPG.W6-DIN-1 | SPRING WASHER (弹垫) | 8 | |
| 02-7 | M700-FN.B-M6x20-8.8-DIN-1 | BOLT (六角螺栓) | 8 | |
| 02-8 | M700-606-040203 | WORM (蜗杆) | 1 | |
| 02-9 | M700-Key.A-5x5x28 | KEY (键) | 1 | |
| 02-10 | M700-W01-6205Z-J | BEARING (轴承) | 1 | |
| 02-11 | M700-CS.RG25 | EXTERNAL CIRCLIP (轴用挡圈) | 1 | |
| 02-12 | M700-606-040107 | SEAL,SIDE COVER (透盖纸垫片) | 1 | |
| 02-13 | M700-606-040104 | SIDE COVER (透盖) | 1 | |
| 02-14 | M700-W03-40x22x7 | OIL SEAL (油封) | 1 | |
| 02-15 | M700-FHSS.S-M8x12 | GRUB SCREW (内六角平端紧定螺钉) | 1 | |
| 02-16 | M700-70G-040314 | PULLEY (皮带轮) | 1 | |
| 02-17 | M700-ConeHSS.S-M8x12 | SOCKET HEAD SCREW (内六角锥端紧定螺钉) | 1 | |
| 02-18 | M700-HSF.S-M8x20 | SOCKET COUNTERSUNK HEAD SCREW(内六角沉头螺钉) | 5 | |
| 02-19 | M700-606-040108 | VENT SCREW (螺纹通气螺丝) | 1 | |
| 02-20 | M700-HSF.S-M8x16 | SOCKET COUNTERSUNK HEAD SCREW(内六角沉头螺钉) | 1 | |
| 02-21 | M700-606-040102 | TOP COVER (蜗轮箱顶盖) | 1 | |
| 02-22 | M700-606-040105 | SEAL, TOP COVER (纸垫片) | 1 | |
| 02-23 | M700-W01-30205-J | BEARING (轴承) | 1 | |
| 02-24 | M700-606-040204 | BUSH (套) | 1 | |
| 02-25 | M700-100G-040201 | WORM GEAR (蜗轮) | 1 | |
| 02-26 | M700-100GB-041000 | OIL GAUGE (油标) | 1 | |
| 02-27 | M600-ZH-D-M20 | WASHER (组合垫圈) | 1 | |
| 02-28 | M700-606-040202 | WORM GEAR SHAFT (蜗轮轴) | 1 | |
| 02-29 | M700-Key.A-8x7x18 | KEY (平键) | 1 | |
| 02-30 | M700-Key.A-8x7x22 | KEY (平键) | 1 | |
| 02-31 | M700-6206Z-J | BEARING(轴承) | 1 | |
| 02-32 | M700-W03-45x30x8 | OIL SEAL (油封) | 1 | |
| 02-33 | M700-100GB-040111 | STOPPER (堵头) | 2 | |
| 02-34 | M700-606-040304 | TILT YOKE (拨叉) | 1 | |
| 02-35 | M700-606-040301 | PIN (销) | 1 | |
| 02-36 | M700-CS.RG8 | EXTERNAL CIRCLIP (轴用挡圈) | 2 | |

M700-03 ENGINE BASE AND CLUTCH ASSY

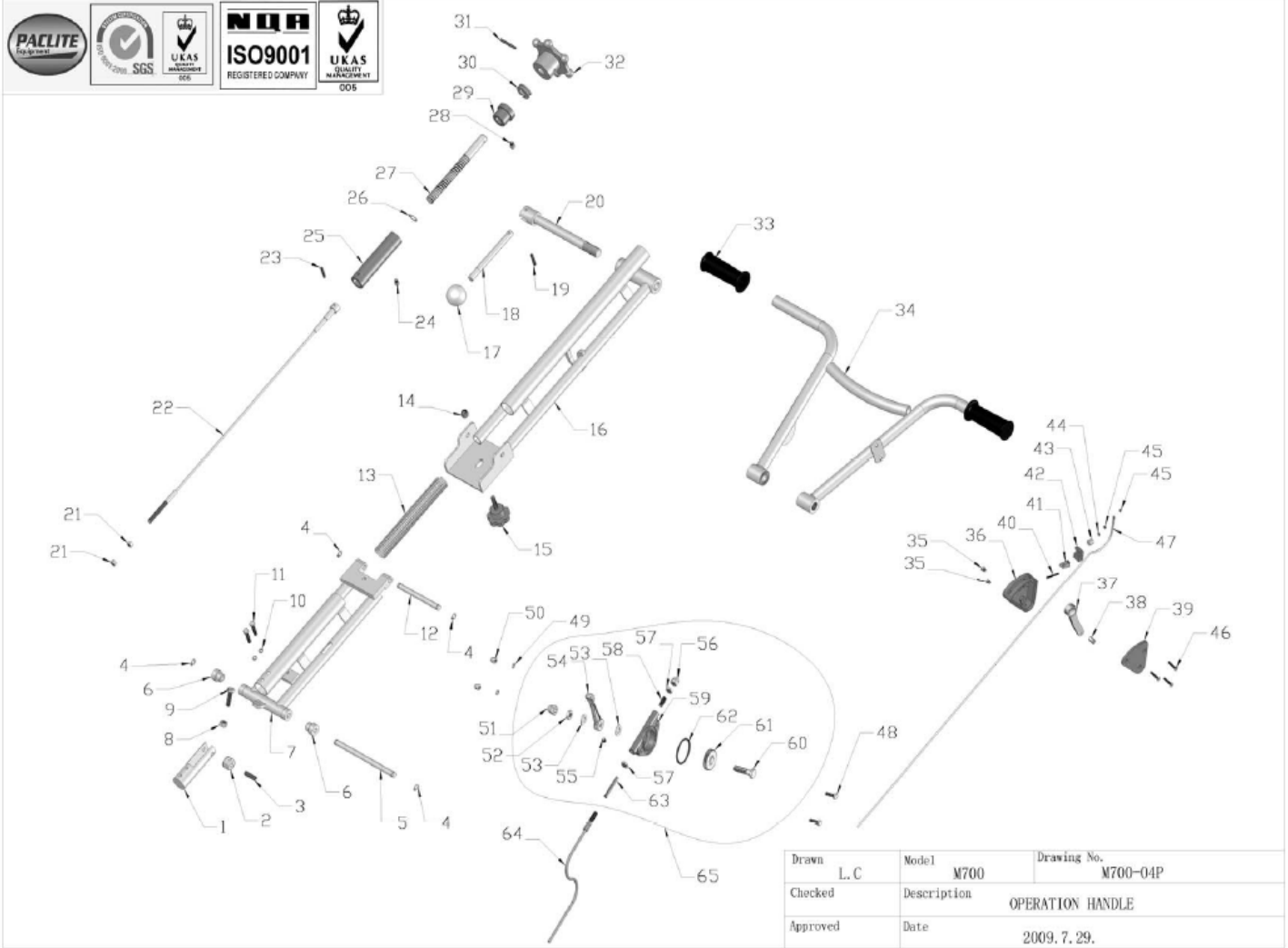


| | | | | | |
|----------|------|-------------|---------------------------|-------------|---------|
| Drawn | L. C | Model | M700 | Drawing No. | M700-03 |
| Checked | | Description | ENGINE BASE & CLUTCH ASSY | | |
| Approved | | Date | 2009. 7. 28. | | |

M700-03 ENGINE BASE AND CLUTCH ASSY

| NO. 序号 | PART NO. 图号 | PART DESCRIPTION 品名 | QTY 数量 | UNIT PRICE (EUR) |
|-----------|---------------------------|--|-----------|---------------------|
| 03-1 | M700-606-010000C | ENGINE BASE (底板焊接) | 1 | |
| 03-2 | M700-FN.N-M8-DIN-1 | NUT (螺母) | 10 | |
| 03-3 | M700-606-010201 | HOOK (挂钩) | 1 | |
| 03-4 | M700-HSF.S-M8x20 | SOCKET COUNTERSUNK HEAD SCREW(内六角沉头螺钉) | 4 | |
| 03-5 | M700-FN.B-M8x25-8.8-DIN-1 | BOLT (六角螺栓) | 4 | |
| 03-6 | M700-X1-J-10.4 | WIRE CLIP (固线夹) | 2 | |
| 03-7 | M700-PAN.S-M4x10 | PAN HEAD SCREW (十字盘头槽螺钉) | 2 | |
| 03-8 | M700-IN.N-M8-DIN-1 | LOCK NUT (防松螺母) | 3 | |
| 03-9 | M700-StarH-M8x35 | STAR GRIP KNOB (五角星形把手) | 1 | |
| 03-10 | M700-FN.W8-DIN-1 | WASHER (平垫) | 11 | |
| 03-11 | M700-SPG.W8-DIN-1 | SPRING WASHER (弹垫) | 11 | |
| 03-12 | M700-FN.B-M8x20-8.8-DIN-1 | BOLT (六角螺栓) | 2 | |
| 03-13 | M700-606-010501 | BRACKET (支架) | 2 | |
| 03-14 | M700-100G-030400 | BOLT (螺栓组) | 1 | |
| 03-15 | M700-W05-EX13 | ENGINE (引擎) | 1 | |
| 03-16 | M700-Key.B-5x5x30 | KEY (平键) | 1 | |
| 03-17 | M700-606-070102 | WASHER (垫圈) | 1 | |
| 03-18 | M700-606-040702 | BRACKET (撑脚) | 1 | |
| 03-19 | M700-HSF.S-M8x30 | SOCKET COUNTERSUNK HEAD SCREW(内六角沉头螺钉) | 2 | |
| 03-20 | M700-606-070100 | SHAFT (轴) | 1 | |
| 03-21 | M700-W01-6006ZZ-J | BEARING (轴承) | 1 | |
| 03-22 | M700-100G-070500 | BUSH (衬套) | 1 | |
| 03-23 | M700-100G-070200 | CLUTCH DRUM (离合器盖) | 1 | |
| 03-24 | M700-100G-070400 | CLUTCH BLOCK (离心块) | 4 | |
| 03-25 | M700-100G-070109 | SPRING (弹簧) | 1 | |
| 03-26 | M700-ConeHSS.S-M8x12 | SOCKET HEAD SCREW (内六角锥端紧定螺钉) | 1 | |
| 03-27 | M700-100G-070300 | CLUTCH PLATE (离合器底座) | 1 | |
| 03-28 | M700-FHSS.S-M8x12 | GRUB SCREW (内六角平端紧定螺钉) | 1 | |
| 03-29 | M700-606-070101 | WASHER (挡圈) | 1 | |
| 03-30 | M700-FN.B-M8x40-8.8-DIN-1 | BOLT (六角螺栓) | 1 | |
| 03-31 | M700-W02-A23.5 | V BELT (V型皮带) | 1 | |
| 03-32 | M700-606-040701 | BELT COVER (皮带罩) | 1 | |
| 03-33 | M700-WOD.W6 | WASHER (大垫圈) | 2 | |
| 03-34 | M700-SPG.W6-DIN-1 | SPRING WASHER (弹垫) | 2 | |
| 03-35 | M700-FN.B-M6x10-8.8-DIN-1 | BOLT (六角螺栓) | 2 | |

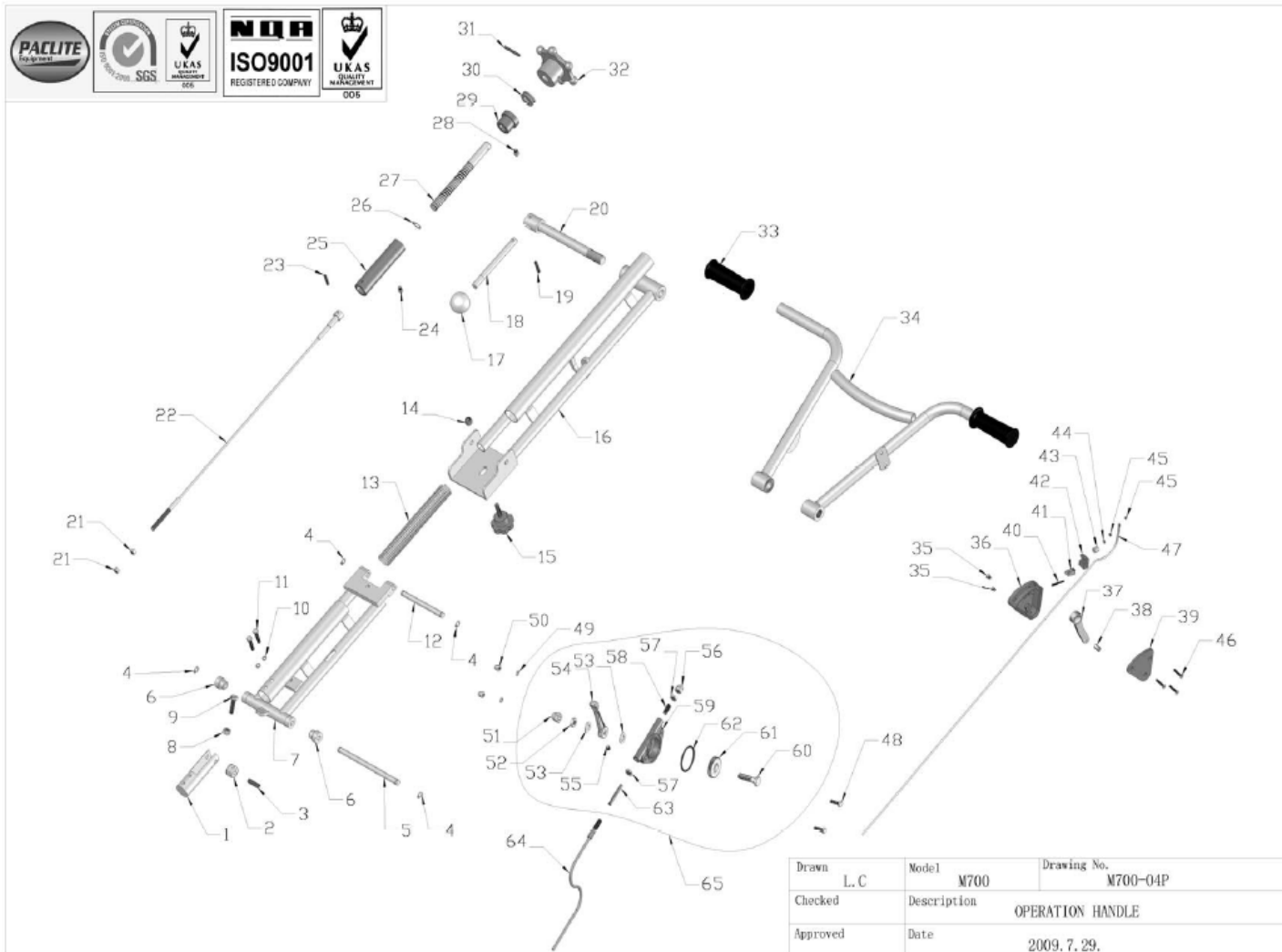
M700-04 OPERATION HANDLE ASSY



M700-04 OPERATION HANDLE ASSY

| NO. 序号 | PART NO. 图号 | PART DESCRIPTION 品名 | QTY 数量 | UNIT PRICE (EUR) |
|-----------|---------------------------|------------------------------------|-----------|---------------------|
| 04-1 | M700-606-000601 | WHEEL BRACKET(滑轮支架) | 1 | |
| 04-2 | M700-606-000501 | WHEEL(滑轮) | 1 | |
| 04-3 | M700-SC.PIN-8x28 | SPRING PIN (弹性圆柱销) | 1 | |
| 04-4 | M700-CS.RG10 | EXTERNAL CIRCLIP (轴用挡圈) | 4 | |
| 04-5 | M700-606-020801 | PIN (销) | 1 | |
| 04-6 | M700-606-020401 | BUSH (轴套) | 2 | |
| 04-7 | M700-606-020100 | HANDLE BOTTOM (下支撑杆焊接) | 1 | |
| 04-8 | M700-FN.N-M8-DIN-1 | NUT (螺母) | 1 | |
| 04-9 | M700-FN.B-M8x30-8.8-DIN-1 | BOLT (六角螺栓) | 1 | |
| 04-10 | M700-SPG.W6-DIN-1 | SPRING WASHER (弹垫) | 2 | |
| 04-11 | M700-FN.B-M6x30-8.8-DIN-1 | BOLT (六角螺栓) | 2 | |
| 04-12 | M700-606-021301 | PIN (销) | 1 | |
| 04-13 | M700-606-000006 | SPRING (弹簧) | 1 | |
| 04-14 | M700-IN.N-M8-DIN-1 | LOCK NUT (防松螺母) | 1 | |
| 04-15 | M700-StarH-M8x35 | STAR GRIP KNOB (五角星形把手) | 1 | |
| 04-16 | M700-606-020200 | HANDLE TOP (上支撑杆焊接) | 1 | |
| 04-17 | M700-SH.A-M12x40 | GRIP BALL (手柄球) | 1 | |
| 04-18 | M700-947-99947 | BAR (杆) | 1 | |
| 04-19 | M700-SC.PIN-6x30 | SPRING PIN (弹性圆柱销) | 1 | |
| 04-20 | M700-606-030501 | SCREWD-TOMMY BAR (锁紧螺杆) | 1 | |
| 04-21 | M700-FN.N-M6-DIN-1 | NUT (螺母) | 2 | |
| 04-22 | M700-606-000010 | DEPTH CONTROL CABLE ASSY(刮板调节钢丝总成) | 1 | |
| 04-23 | M700-SC.PIN-5x28 | SPRING PIN (弹性圆柱销) | 1 | |
| 04-24 | M700-HS.B-M5x8-8.8-GB-1 | SCREW (内六角螺钉) | 1 | |
| 04-25 | M700-606-000301 | SLIDE BUSH(钢丝绳调节活塞) | 1 | |
| 04-26 | M700-CS.RG16 | EXTERNAL CIRCLIP (轴用挡圈) | 1 | |
| 04-27 | M700-100G-010003 | ADJUSTING SCREW (调节螺杆) | 1 | |
| 04-28 | M700-HS.B-M6x8-8.8-GB-1 | SCREW (内六角螺钉) | 1 | |
| 04-29 | M700-606-000701 | BEARING COVER(调整盖) | 1 | |
| 04-30 | M700-W01-51103-J | BEARING (轴承) | 1 | |
| 04-31 | M700-SC.PIN-5x40 | SPRING PIN (弹性圆柱销) | 1 | |
| 04-32 | M700-100G-010008P | PITCH CONTROL KNOB(钢丝绳调节把手) | 1 | |
| 04-33 | M700-100G-010001 | HANDLE COVER (扶手套) | 2 | |
| 04-34 | M700-606-030000P | HANDLE (上扶手) | 1 | |
| 04-35 | M700-F.S-M5x10 | COUNTERSUNK HEAD SCREW (螺钉) | 2 | |
| 04-36 | M700-100G-010101 | CUTOUT SWITCH SHELL (安全开关壳) | 1 | |
| 04-37 | M700-100G-010103 | CUTOUT SWITCH LEVER (安全开关扳杆) | 1 | |
| 04-38 | M700-100G-010104 | CUTOUT SWITCH BUSH (安全开关套) | 1 | |
| 04-39 | M700-100G-010102 | CUTOUT COVER (安全开关盖) | 1 | |
| 04-40 | M700-F.S-M3x30 | COUNTERSUNK HEAD SCREW (十字槽沉头螺钉) | 1 | |
| 04-41 | M700-100G-010107 | CUTOUT SWITCH REED (安全开关弹簧片) | 1 | |
| 04-42 | M700-100G-010105 | CUTOUT SWITCH OUTLET (安全开关座) | 1 | |
| 04-43 | M700-100G-010106 | CUTOUT SWITCH WASHER (安全开关垫圈) | 1 | |
| 04-44 | M700-FN.W3-DIN-2 | WASHER (平垫) | 1 | |
| 04-45 | M700-FN.N-M3-DIN-1 | NUT (螺母) | 2 | |

M700-04 OPERATION HANDLE ASSY



| | | | | |
|-------|---------------------------|--|---|--|
| 04-46 | M700-F.S-M4x25 | COUNTERSUNK HEAD SCREW (十字沉头螺钉) | 3 | |
| 04-47 | M700-100G-000014 | WIRE HARNESS (电线) | 1 | |
| 04-48 | M700-FN.B-M6x20-8.8-DIN-2 | BOLT (六角螺栓) | 2 | |
| 04-49 | M700-SPG.W6-DIN-2 | SPRING WASHER (弹垫) | 2 | |
| 04-50 | M700-HC.N-M6-DIN-2 | CAP NUT (盖型螺母) | 2 | |
| 04-51 | M700-HC.N-M10-DIN-2 | CAP NUT (盖形螺母) | 1 | |
| 04-52 | M700-FNL.N-M10-DIN-2 | HEXAGON THIN NUT (六角薄螺母) | 1 | |
| 04-53 | M700-FN.W10-DIN-2 | WASHER (平垫) | 2 | |
| 04-54 | M700-70ND-060000 | THROTTLE LEVER (油门开关把手) | 1 | |
| 04-55 | M700-FHSS.S-M6x8-GB-3 | SOCKET SCREW WITH FLAT HEAD(内六角平端紧定螺钉) | 1 | |
| 04-56 | M700-HC.N-M8-DIN-2 | CAP NUT (盖型螺母) | 1 | |
| 04-57 | M700-FNL.N-M8-DIN-2 | HEXAGON THIN NUT (六角薄螺母) | 2 | |
| 04-58 | M700-FHSS.S-M8x20-GB-3 | SOCKET SCREW WITH FLAT HEAD(内六角平端紧定螺钉) | 1 | |
| 04-59 | M700-70ND-060001 | THROTTLE BODY (油门把手盖) | 1 | |
| 04-60 | M700-70ND-060003 | BOLT (油门螺栓) | 1 | |
| 04-61 | M700-70ND-060002 | THROTTLE GEAR (齿轮) | 1 | |
| 04-62 | M700-W04-45x3 | O-RING (O形圈) | 1 | |
| 04-63 | M700-70ND-060004 | SLIDER (齿条) | 1 | |
| 04-64 | M700-W06-S04-L1420x1620 | THROTTLE CABLE (油门线) | 1 | |
| 04-65 | M700-100GB-70ND-010018 | THROTTLE LEVER ASSY (油门开关组件) | 1 | |